

Positional Concepts
Teaching Basic Skills, Level 1



Domain:

- Language, Fine Motor

Objectives:

- Child will identify positional concepts next to, over, under, or inside.
- Child will place a shovel in or around the pail as directed by the teacher.

Materials:

- Small shovel
- Sand pail



Instructions:

- Teacher will demonstrate positional words by placing the shovel next to, over, under, or inside of the pail.
- Use positional words to instruct children where the shovel should be placed.
- Child will place the shovel in appropriate position.

Suggestions

- Use a variety of objects to reinforce positional concepts.
 - Candles and cake
 - Bee and flower
 - Key and lock
 - Shoe and sock



Birds, Bees and Trees
Position Words
Level 2



Domain:

- Language, Fine Motor

Objectives:

- Child will identify positional concepts - above, below and beside.
- Child will cut along straight lines to separate bees and birds from strip.
- Child will paste bees or birds in correct position according to teacher directions.

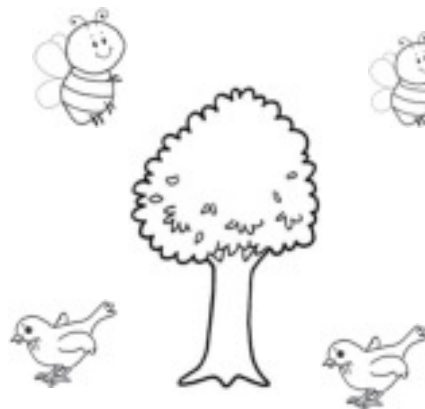
Materials:

- *Birds, Bees and Trees* work pages
- construction paper
- scissors
- glue



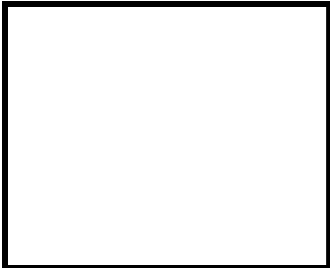
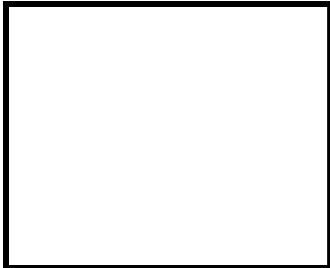
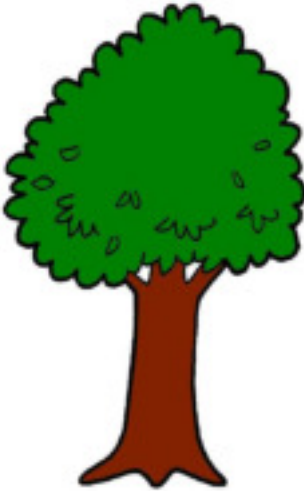
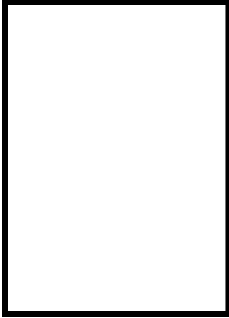
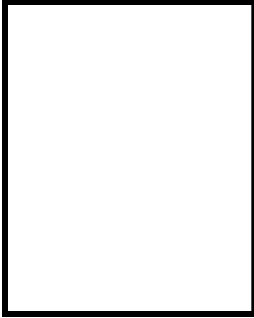
Instructions:

- Teacher will copy *Birds, Bees and Trees* work pages.
- Teacher will demonstrate positional words by placing birds and bees above and below the tree.
- Give each child a strip of birds and bees.
- Child will cut lines to separate birds and bees.
- Use positional words to instruct children where birds and bees should be pasted.
- Child will paste birds and bees in appropriate position.

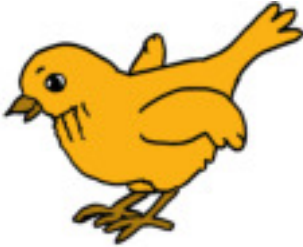


Birds, Bees, and Trees

Put the bees
OVER the
tree.

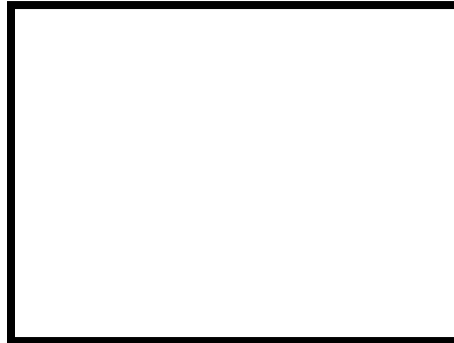


Put the birds
UNDER the
tree



Birds, Bees, and Trees

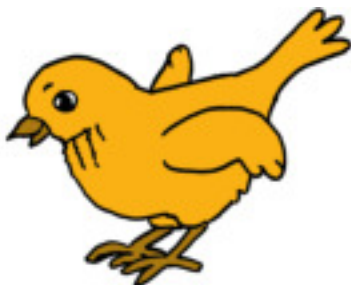
Put the bird OVER the tree.



Put the flower BESIDE the tree.



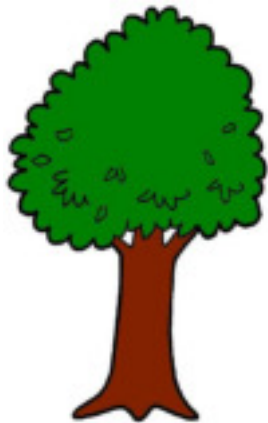
Put the bee UNDER the tree.



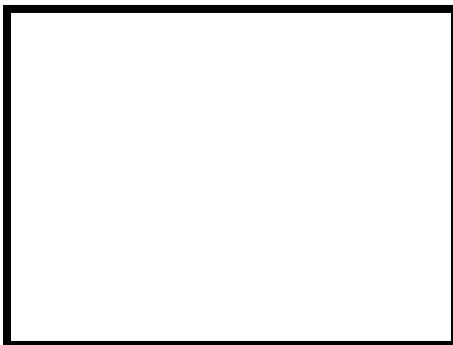
Birds, Bees, and Trees



Put the bee OVER the tree.



Put the duck BESIDE the tree.



Put the bunny UNDER the tree.

